

Office | For Lease

CBRE

721 Santa Monica

717-721 Santa Monica Blvd
Santa Monica, CA 90401



721 Santa Monica

717-721 Santa Monica Blvd | Santa Monica, CA
90401

For Lease

Move-In Ready Office Space

Newly Refreshed

Located in the heart of downtown Santa Monica and a 5-minute walk to 3rd Street Promenade and all of Santa Monica's most famous eateries and bars, this newly renovated 2nd floor office space is available and ready for immediate occupancy.

With a dense private office build-out, a tenant can move-in and avoid costly construction and delayed occupancy. With great connectivity, this space can equally service employees coming in and out of Santa Monica from multiple directions.

Space Highlights

- + 3,870 RSF
- + Available Immediately
- + Asking Rent: \$3.50/SF, Modified Gross
- + Up to 18 parking spaces on-site at \$200 per space
- + Close proximity to Expo Metro Station Downtown Santa Monica
- + Easy access via Lincoln to Santa Monica (10) Freeway
- + Walking distance to numerous restaurants, shops and other amenities



Contact Us

Jeff Pion

Vice Chairman
+1 310 550 2537
jeff.pion@cbre.com
Lic. 00840278

Michelle Esquivel-Hall

Executive Vice President
+1 310 550 2525
michelle.esquivel@cbre.com
Lic. 01290582

Drew Pion

Associate
+1 310 550 2566
drew.pion@cbre.com
Lic. 02085229

© 2021 CBRE, Inc. All rights reserved. This information has been obtained from sources believed reliable, but has not been verified for accuracy or completeness. You should conduct a careful, independent investigation of the property and verify all information. Any reliance on this information is solely at your own risk. CBRE and the CBRE logo are service marks of CBRE, Inc. All other marks displayed on this document are the property of their respective owners, and the use of such logos does not imply any affiliation with or endorsement of CBRE. Photos herein are the property of their respective owners. Use of these images without the express written consent of the owner is prohibited.

CBRE

721 Santa Monica

717-721 Santa Monica Blvd | Santa Monica, CA
90401

For Lease

+ Photos



Contact Us

Jeff Pion

Vice Chairman
+1 310 550 2537
jeff.pion@cbre.com
Lic. 00840278

Michelle Esquivel-Hall

Executive Vice President
+1 310 550 2525
michelle.esquivel@cbre.com
Lic. 01290582

Drew Pion

Associate
+1 310 550 2566
drew.pion@cbre.com
Lic. 02085229

© 2021 CBRE, Inc. All rights reserved. This information has been obtained from sources believed reliable, but has not been verified for accuracy or completeness. You should conduct a careful, independent investigation of the property and verify all information. Any reliance on this information is solely at your own risk. CBRE and the CBRE logo are service marks of CBRE, Inc. All other marks displayed on this document are the property of their respective owners, and the use of such logos does not imply any affiliation with or endorsement of CBRE. Photos herein are the property of their respective owners. Use of these images without the express written consent of the owner is prohibited.

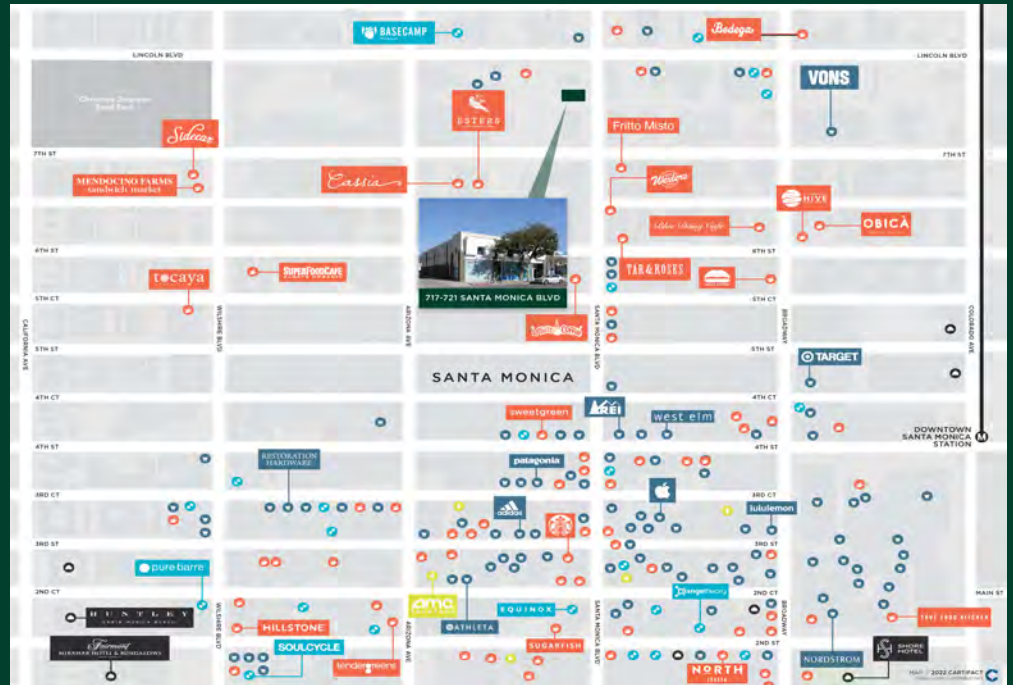
CBRE

721 Santa Monica

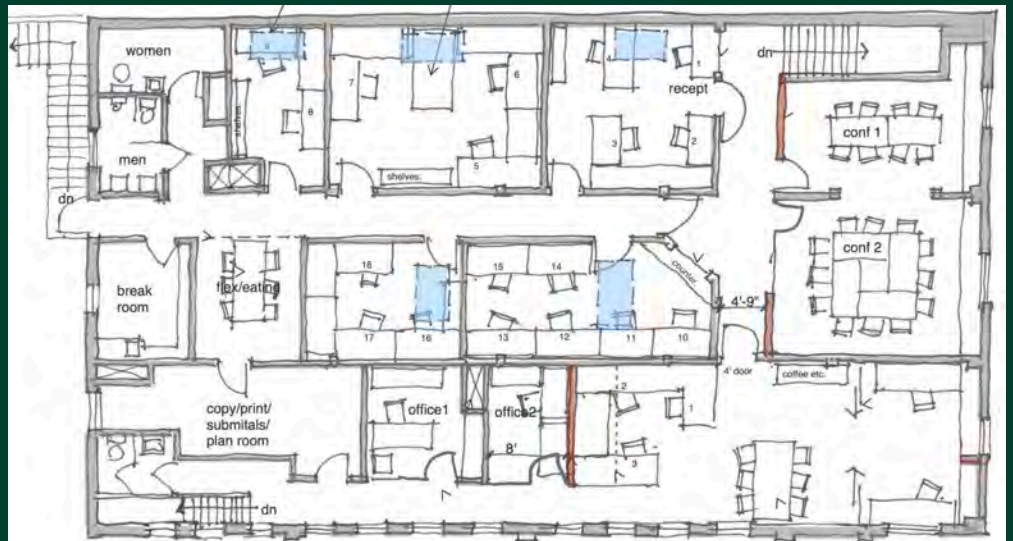
717-721 Santa Monica Blvd | Santa Monica, CA
90401

For Lease

+ Amenities Map



+ Floor Plan



Contact Us

Jeff Pion

Vice Chairman
+1 310 550 2537
jeff.pion@cbre.com
Lic. 00840278

Michelle Esquivel-Hall

Executive Vice President
+1 310 550 2525
michelle.esquivel@cbre.com
Lic. 01290582

Drew Pion

Associate
+1 310 550 2566
drew.pion@cbre.com
Lic. 02085229

© 2021 CBRE, Inc. All rights reserved. This information has been obtained from sources believed reliable, but has not been verified for accuracy or completeness. You should conduct a careful, independent investigation of the property and verify all information. Any reliance on this information is solely at your own risk. CBRE and the CBRE logo are service marks of CBRE, Inc. All other marks displayed on this document are the property of their respective owners, and the use of such logos does not imply any affiliation with or endorsement of CBRE. Photos herein are the property of their respective owners. Use of these images without the express written consent of the owner is prohibited.

CBRE