



**721**

SANTA MONICA BLVD, SANTA MONICA, CA 90401

OFFICE SPACE  
FOR LEASE

## Building description:

Positioned in the heart of Santa Monica, 721 Santa Monica Boulevard presents an opportunity to lease a two-story commercial property in one of Los Angeles' most dynamic and walkable business corridors. The second floor offers approximately 3,870 square feet of flexible office space, ideal for a wide range of professional, creative, or boutique firms seeking a highly accessible and amenity-rich location.

Surrounded by an abundance of dining, retail, and lifestyle conveniences, the property provides immediate access to the best of Santa Monica, all within a short walk. Its central location offers seamless connectivity to major thoroughfares and public transportation, making it an attractive option for both employees and clients alike.

The building combines functionality with convenience, delivering an efficient layout and a professional environment that supports productivity and growth. Offered at a competitive, below-market rate, this opportunity is strategically priced to attract tenants seeking exceptional value in a premier coastal market.

721 Santa Monica Boulevard stands out as a compelling choice for businesses looking to establish or expand their presence in a vibrant, high-demand location—where accessibility, visibility, and lifestyle converge.



## PROPERTY OVERVIEW

PREMISES: ± 3,870 Square Feet

RATE: \$1.50/SF NNN

OCCUPANCY: Immediate

TERM: 2-3 YEARS

PARKING: 18 Cars at \$200/car/month

ZONING: SMLT



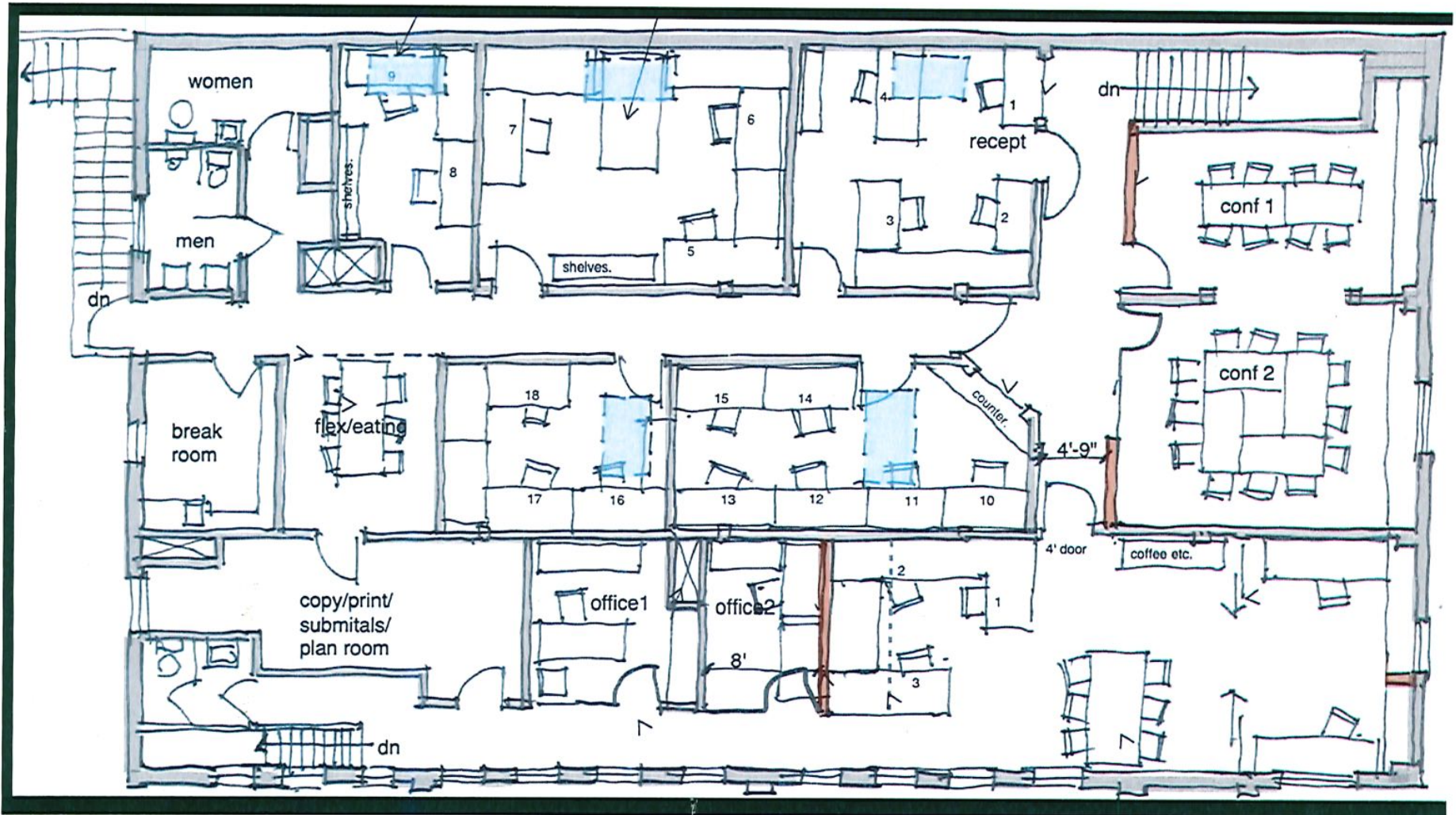
7TH CT

SANTA MONICA BLVD

# 721

SANTA MONICA BLVD

## FLOOR PLAN



# 721

SANTA MONICA BLVD

---

## NEARBY AMENITIES



TARTINE





**KEITH FIELDING**  
PRINCIPAL

310.899.2719 | [kfielding@leewestla.com](mailto:kfielding@leewestla.com)  
AGT DRE 01729915

**TIBOR LODY, SIOR**  
PRINCIPAL

310.899.2720 | [tlody@leewestla.com](mailto:tlody@leewestla.com)  
AGT DRE 01261129

**ALEKS TRIFUNOVIC, SIOR**  
PRINCIPAL

310.899.2721 | [atrifunovic@leewestla.com](mailto:atrifunovic@leewestla.com)  
AGT DRE 01363109

**TOMMY ISOLA**  
PRINCIPAL

310.899.2709 | [tisola@leewestla.com](mailto:tisola@leewestla.com)  
AGT DRE 01974024

**ADAM LEVINE**  
SENIOR ASSOCIATE

310.899.2703 | [alevine@leewestla.com](mailto:alevine@leewestla.com)  
AGT DRE 02104830

1508 17TH ST, SANTA MONICA CA 90404 | [LEEWESTLA.COM](http://LEEWESTLA.COM) | 310.899.2700 | DRE 01222000

No warranty or representation is made to the accuracy of the foregoing information. Terms of sales or lease are subject to change or withdrawal without notice.

\*Certain images contained herein are conceptual renderings or representative photographs provided for illustrative purposes only. They do not depict the actual premises and are subject to change without notice.